

GENERAL NOTES



Designates signal source which connects to loads off this board and may also have loads on this board.



Designates signal from a source not on this board.



Designates source for a signal used only on this board.



Designates load for signal used only on this board.



Designates front and rear panel labeling.

All NPN transistors are 2N2369 or equivalent unless otherwise marked.

All PNP transistors are 2N3638 or equivalent unless otherwise marked.

All resistors are $\frac{1}{4}$ watt 5%, unless otherwise marked.

4K7

Resistor whose value is 4700 ohms.

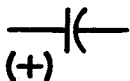
4M7

Resistor whose value is 4.7 megohm.

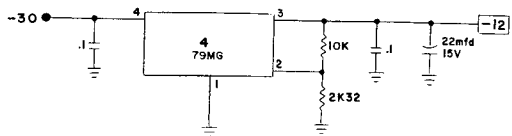
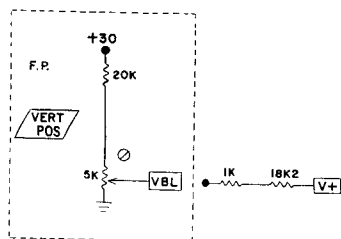
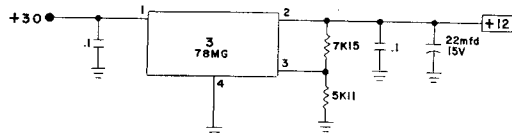
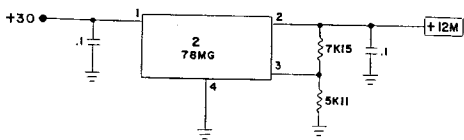
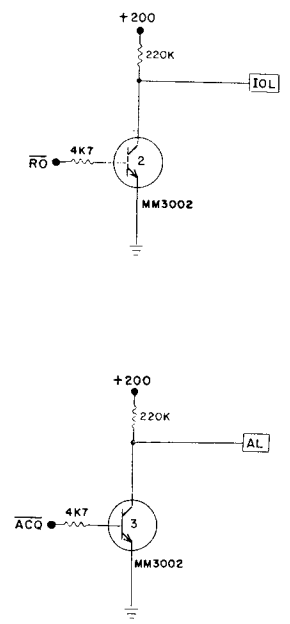
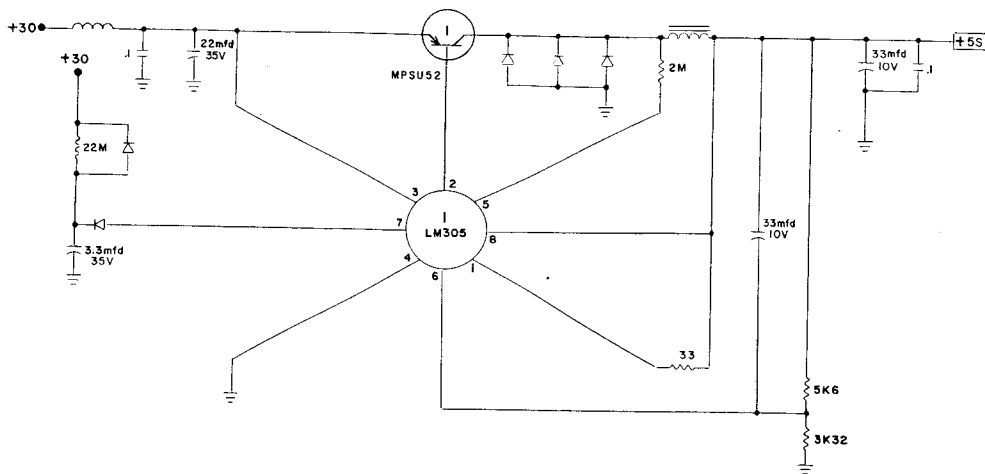
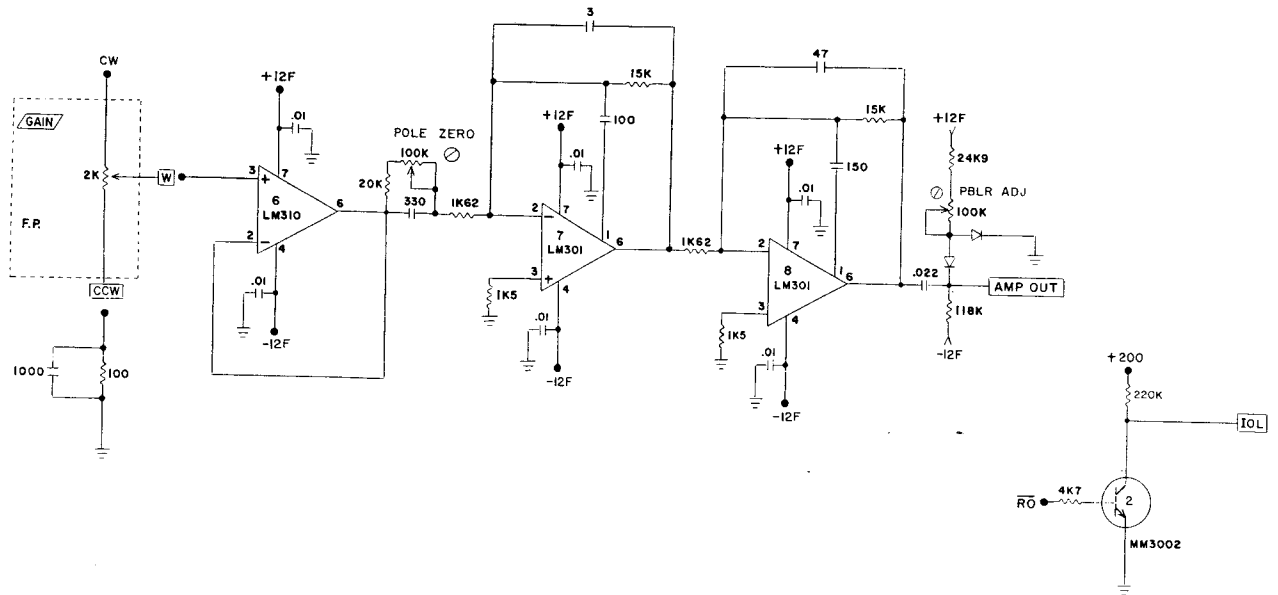
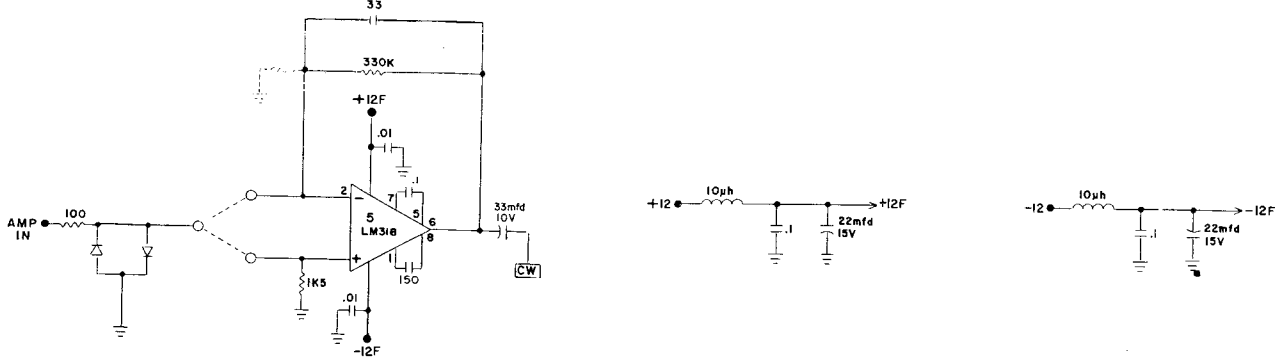
MF designates precision metal film $\frac{1}{4}$ w \pm 1% resistors, unless otherwise specified.

All diodes are Fairchild IN4150 or equivalent unless otherwise specified.

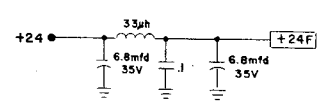
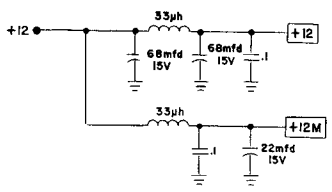
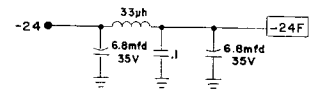
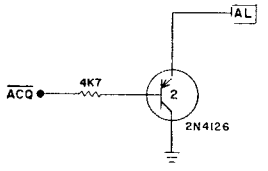
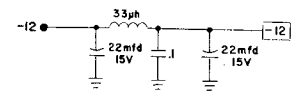
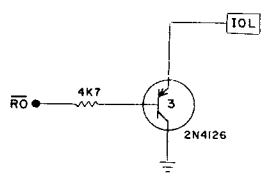
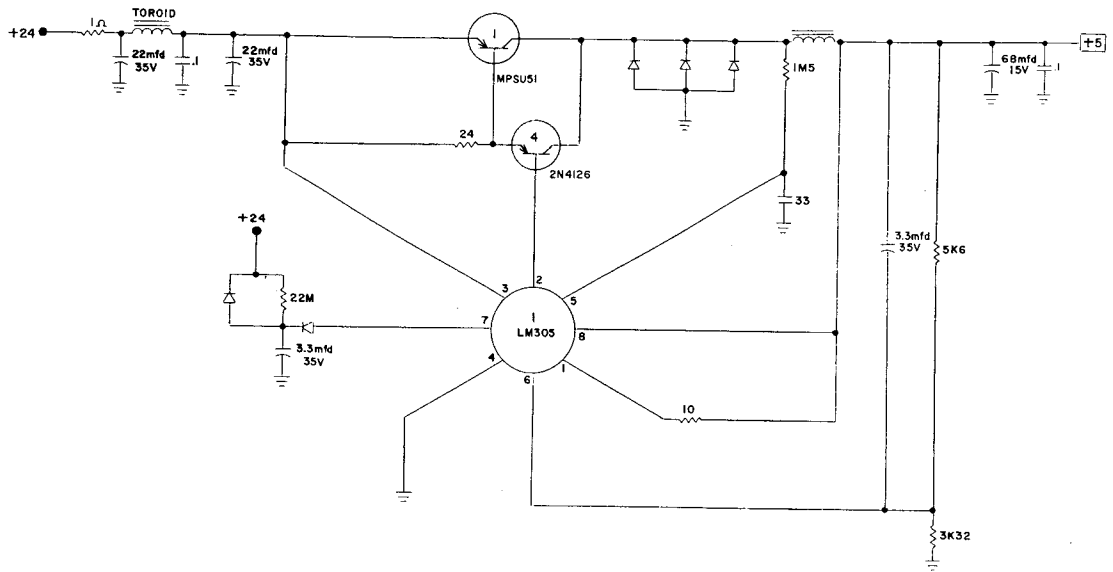
Capacitance values shown as whole numbers are in picofarads (1000 = 1000pf). Capacitance values expressed with decimal points are in microfarads (.05 = .05 microfarads). Polarized capacitors may be exceptions to these rules.



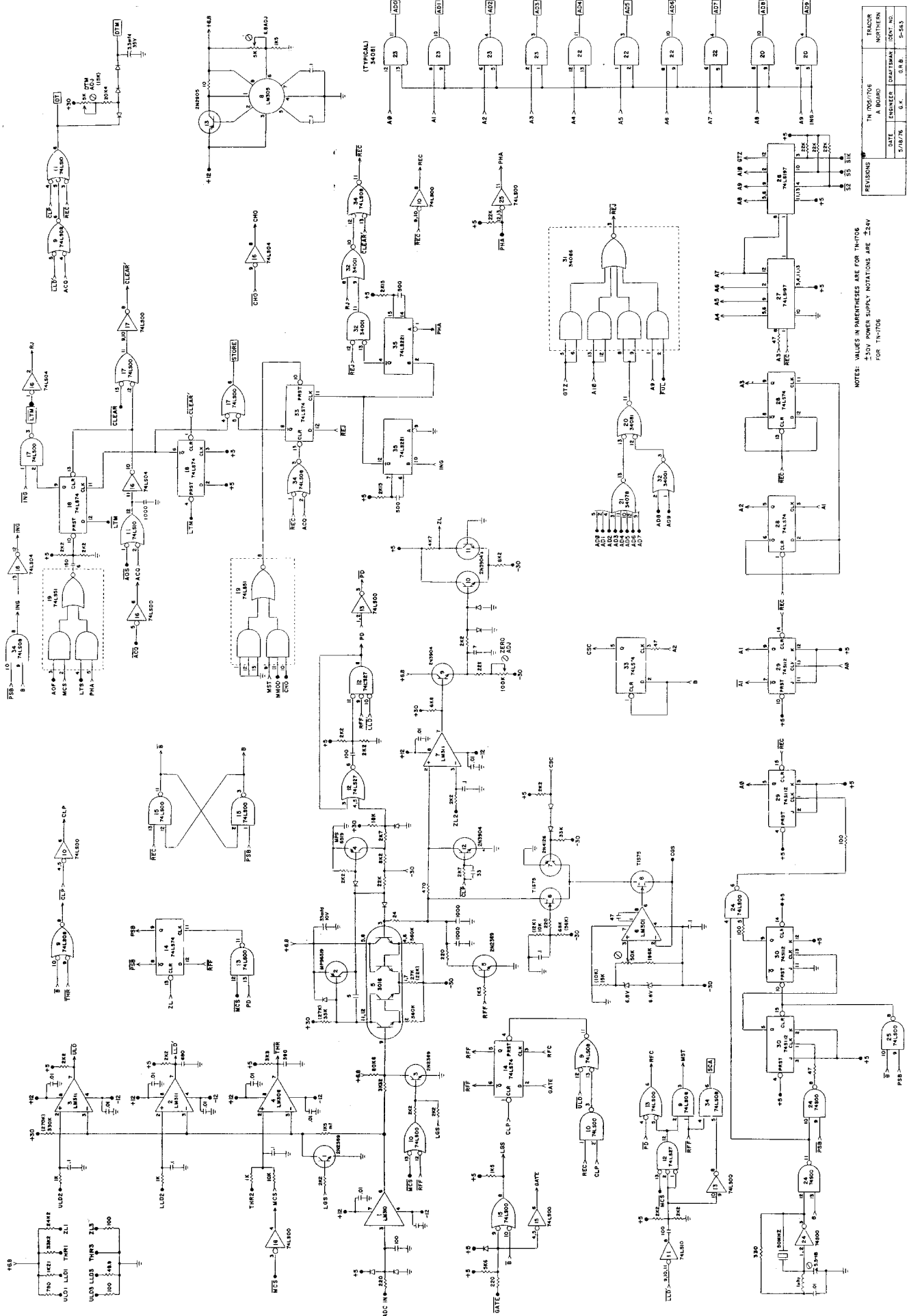
Polarized capacitors are as shown.



| REVISIONS | TN 1705 MOTHER BOARD | | TRACOR NORTHERN |
|-----------|-------------------------|----------|----------------------|
| | DATE | ENGINEER | DRAFTSMAN IDENT. NO. |
| | 5/18/76 | G.K. | G.R.B. S-56J |



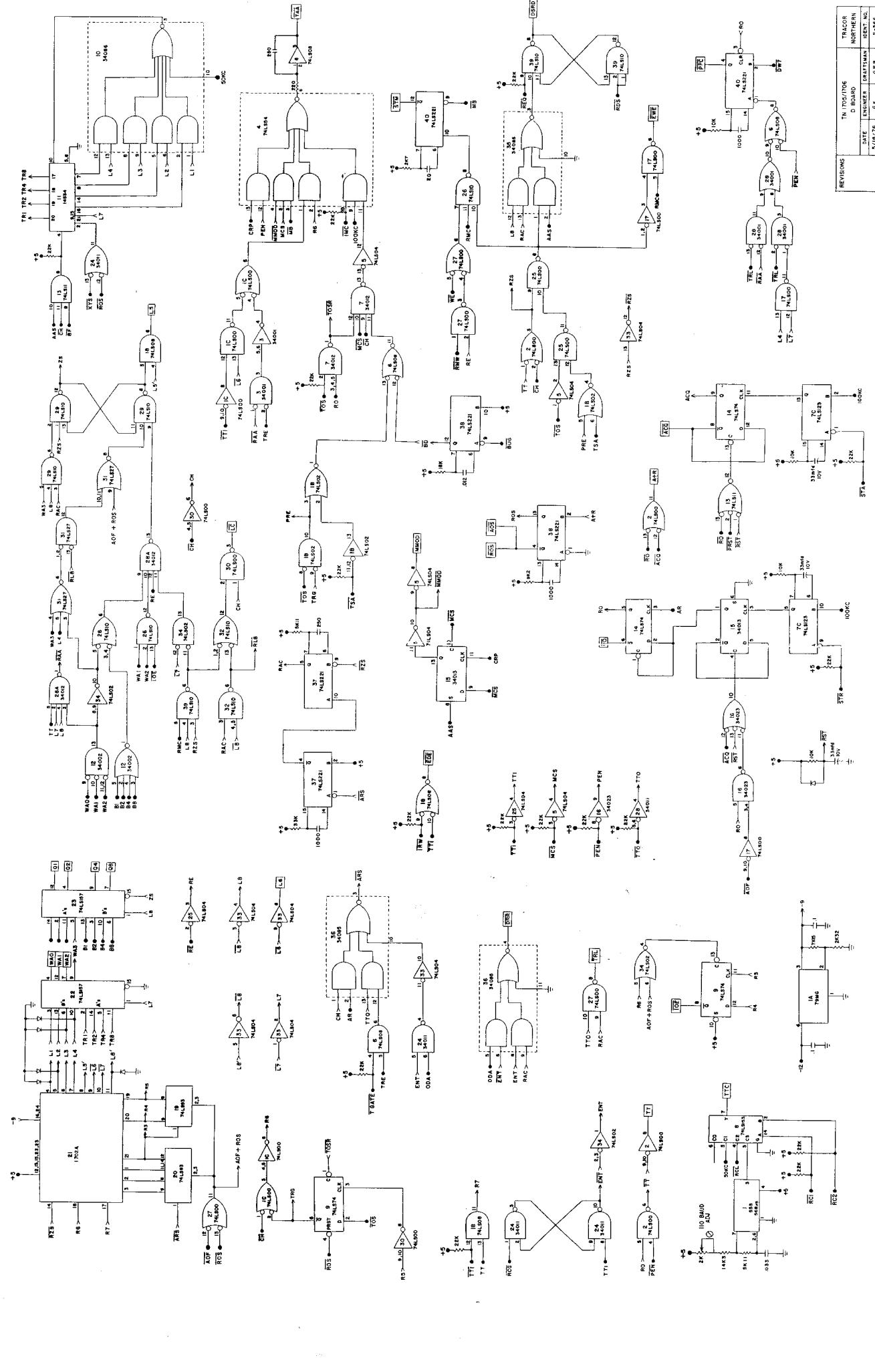
| REVISIONS | TN 1706 MOTHER BOARD | | | TRACOR NORTHERN |
|-----------|-------------------------|----------|-----------|--------------------|
| | DATE | ENGINEER | DRAFTSMAN | IDENT. NO. |
| | 5/18/76 | G.K. | G.R.B. | S-597 |



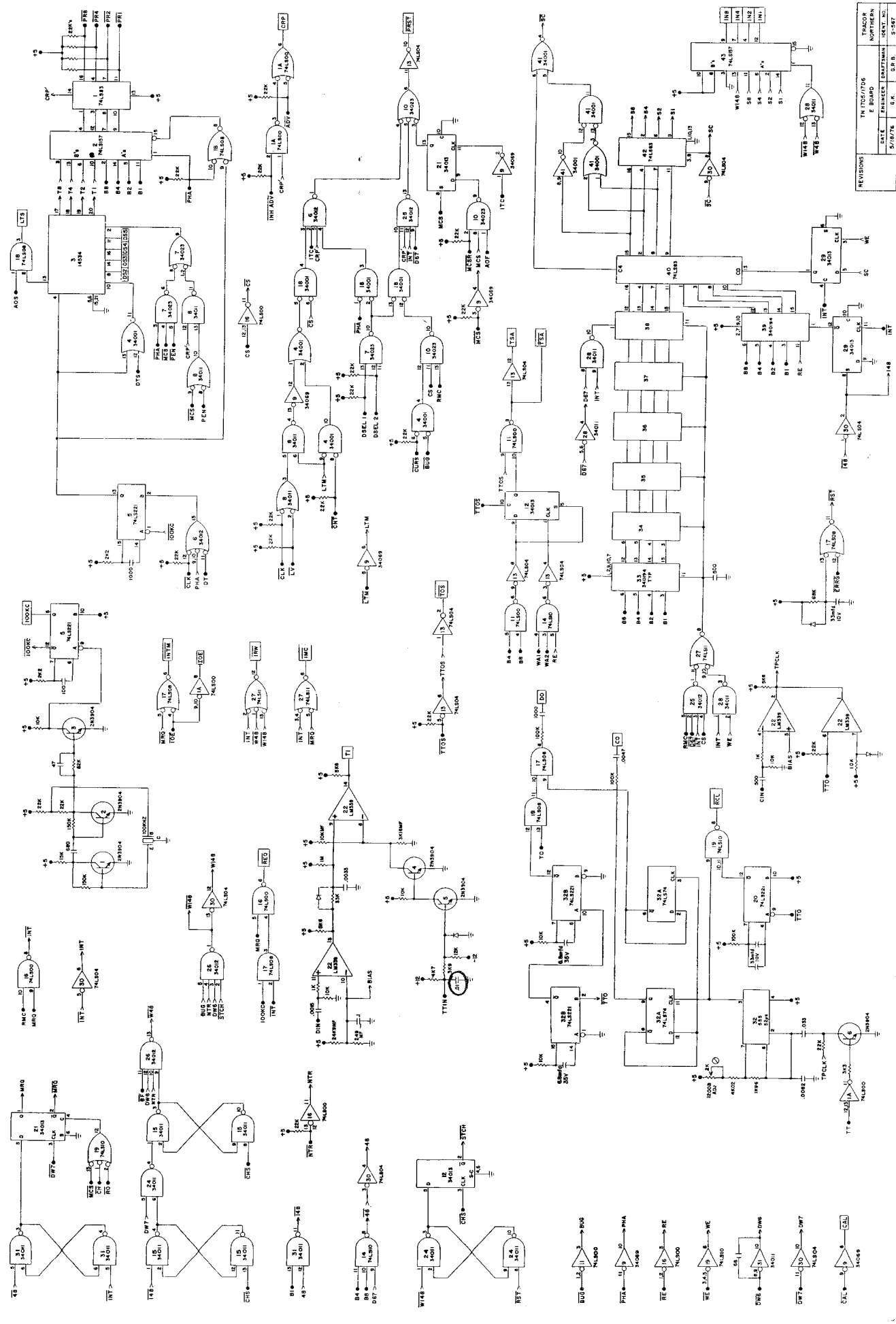
NOTES: VALUES IN PARENTHESES ARE FOR TH170G
 ±5V POWER SUPPLY NOTATIONS ARE ±5V
 FOR TH170B

| REV | DATE | ENGINEER | DRAFTSMAN | CHKD BY | APP'D BY |
|-----|---------|----------|-----------|---------|----------|
| 1 | 5/18/76 | G.K. | | | |

| TRACOR | TH170G/170B |
|-----------|-------------|
| NORTHERN | |
| UNIT NO. | |
| DATE | 5/18/76 |
| ENGINEER | G.K. |
| DRAFTSMAN | |
| CHKD BY | |
| APP'D BY | |



| REVISIONS | | | |
|--------------|----------|-----------|-----------|
| IN 1705/1706 | TRACOR | | |
| D BOARD | NORTHERN | | |
| DATE | ENGINEER | DRAFTSMAN | IDENT NO. |
| 5/18/76 | E.A. | G.P.B. | 3-385 |



| REVISIONS | | TRACK # | |
|-----------|---------|---------|----------------|
| NO. | DATE | NO. | DESCRIPTION |
| 1 | 5/17/76 | 1 | INITIAL DESIGN |
| 2 | 5/17/76 | 2 | REVISED |
| 3 | 5/17/76 | 3 | REVISED |
| 4 | 5/17/76 | 4 | REVISED |
| 5 | 5/17/76 | 5 | REVISED |
| 6 | 5/17/76 | 6 | REVISED |
| 7 | 5/17/76 | 7 | REVISED |
| 8 | 5/17/76 | 8 | REVISED |
| 9 | 5/17/76 | 9 | REVISED |
| 10 | 5/17/76 | 10 | REVISED |
| 11 | 5/17/76 | 11 | REVISED |
| 12 | 5/17/76 | 12 | REVISED |
| 13 | 5/17/76 | 13 | REVISED |
| 14 | 5/17/76 | 14 | REVISED |
| 15 | 5/17/76 | 15 | REVISED |
| 16 | 5/17/76 | 16 | REVISED |
| 17 | 5/17/76 | 17 | REVISED |
| 18 | 5/17/76 | 18 | REVISED |
| 19 | 5/17/76 | 19 | REVISED |
| 20 | 5/17/76 | 20 | REVISED |
| 21 | 5/17/76 | 21 | REVISED |
| 22 | 5/17/76 | 22 | REVISED |
| 23 | 5/17/76 | 23 | REVISED |
| 24 | 5/17/76 | 24 | REVISED |
| 25 | 5/17/76 | 25 | REVISED |
| 26 | 5/17/76 | 26 | REVISED |
| 27 | 5/17/76 | 27 | REVISED |
| 28 | 5/17/76 | 28 | REVISED |
| 29 | 5/17/76 | 29 | REVISED |
| 30 | 5/17/76 | 30 | REVISED |
| 31 | 5/17/76 | 31 | REVISED |
| 32 | 5/17/76 | 32 | REVISED |
| 33 | 5/17/76 | 33 | REVISED |
| 34 | 5/17/76 | 34 | REVISED |
| 35 | 5/17/76 | 35 | REVISED |
| 36 | 5/17/76 | 36 | REVISED |
| 37 | 5/17/76 | 37 | REVISED |
| 38 | 5/17/76 | 38 | REVISED |
| 39 | 5/17/76 | 39 | REVISED |
| 40 | 5/17/76 | 40 | REVISED |
| 41 | 5/17/76 | 41 | REVISED |
| 42 | 5/17/76 | 42 | REVISED |
| 43 | 5/17/76 | 43 | REVISED |
| 44 | 5/17/76 | 44 | REVISED |
| 45 | 5/17/76 | 45 | REVISED |
| 46 | 5/17/76 | 46 | REVISED |
| 47 | 5/17/76 | 47 | REVISED |
| 48 | 5/17/76 | 48 | REVISED |
| 49 | 5/17/76 | 49 | REVISED |
| 50 | 5/17/76 | 50 | REVISED |
| 51 | 5/17/76 | 51 | REVISED |
| 52 | 5/17/76 | 52 | REVISED |
| 53 | 5/17/76 | 53 | REVISED |
| 54 | 5/17/76 | 54 | REVISED |
| 55 | 5/17/76 | 55 | REVISED |
| 56 | 5/17/76 | 56 | REVISED |
| 57 | 5/17/76 | 57 | REVISED |
| 58 | 5/17/76 | 58 | REVISED |
| 59 | 5/17/76 | 59 | REVISED |
| 60 | 5/17/76 | 60 | REVISED |
| 61 | 5/17/76 | 61 | REVISED |
| 62 | 5/17/76 | 62 | REVISED |
| 63 | 5/17/76 | 63 | REVISED |
| 64 | 5/17/76 | 64 | REVISED |
| 65 | 5/17/76 | 65 | REVISED |
| 66 | 5/17/76 | 66 | REVISED |
| 67 | 5/17/76 | 67 | REVISED |
| 68 | 5/17/76 | 68 | REVISED |
| 69 | 5/17/76 | 69 | REVISED |
| 70 | 5/17/76 | 70 | REVISED |
| 71 | 5/17/76 | 71 | REVISED |
| 72 | 5/17/76 | 72 | REVISED |
| 73 | 5/17/76 | 73 | REVISED |
| 74 | 5/17/76 | 74 | REVISED |
| 75 | 5/17/76 | 75 | REVISED |
| 76 | 5/17/76 | 76 | REVISED |
| 77 | 5/17/76 | 77 | REVISED |
| 78 | 5/17/76 | 78 | REVISED |
| 79 | 5/17/76 | 79 | REVISED |
| 80 | 5/17/76 | 80 | REVISED |
| 81 | 5/17/76 | 81 | REVISED |
| 82 | 5/17/76 | 82 | REVISED |
| 83 | 5/17/76 | 83 | REVISED |
| 84 | 5/17/76 | 84 | REVISED |
| 85 | 5/17/76 | 85 | REVISED |
| 86 | 5/17/76 | 86 | REVISED |
| 87 | 5/17/76 | 87 | REVISED |
| 88 | 5/17/76 | 88 | REVISED |
| 89 | 5/17/76 | 89 | REVISED |
| 90 | 5/17/76 | 90 | REVISED |
| 91 | 5/17/76 | 91 | REVISED |
| 92 | 5/17/76 | 92 | REVISED |
| 93 | 5/17/76 | 93 | REVISED |
| 94 | 5/17/76 | 94 | REVISED |
| 95 | 5/17/76 | 95 | REVISED |
| 96 | 5/17/76 | 96 | REVISED |
| 97 | 5/17/76 | 97 | REVISED |
| 98 | 5/17/76 | 98 | REVISED |
| 99 | 5/17/76 | 99 | REVISED |
| 100 | 5/17/76 | 100 | REVISED |